

Ravensby Glass
Fowler Road,
West Pitkerro Road Industrial Estate,
Broughty Ferry
Dundee
DD5 3RU

Quotation no. *20-11-105-R1*

12.11.2020

BOTTERO AUTOMATIC COMBINATION FLOAT & LAMINATED GLASS LOADING & CUTTING LINE

As detailed in layout drawing UK-RG101120_3

COMPRISING:

- **630CBM-J Automatic Double-Sided Mobile Loading Machine**
- **363EVO-J Automatic Float Glass Cutting Section**
- **548LAM 2.0 - 4900 Laminated Cutting Section with Full Automation Pack**

BOTTERO 630CBM-J

HEAVY DUTY AUTOMATIC DOUBLE-SIDED MOBILE LOADING MACHINE



* Picture provided for illustration purposes only and shows 620CMT-R

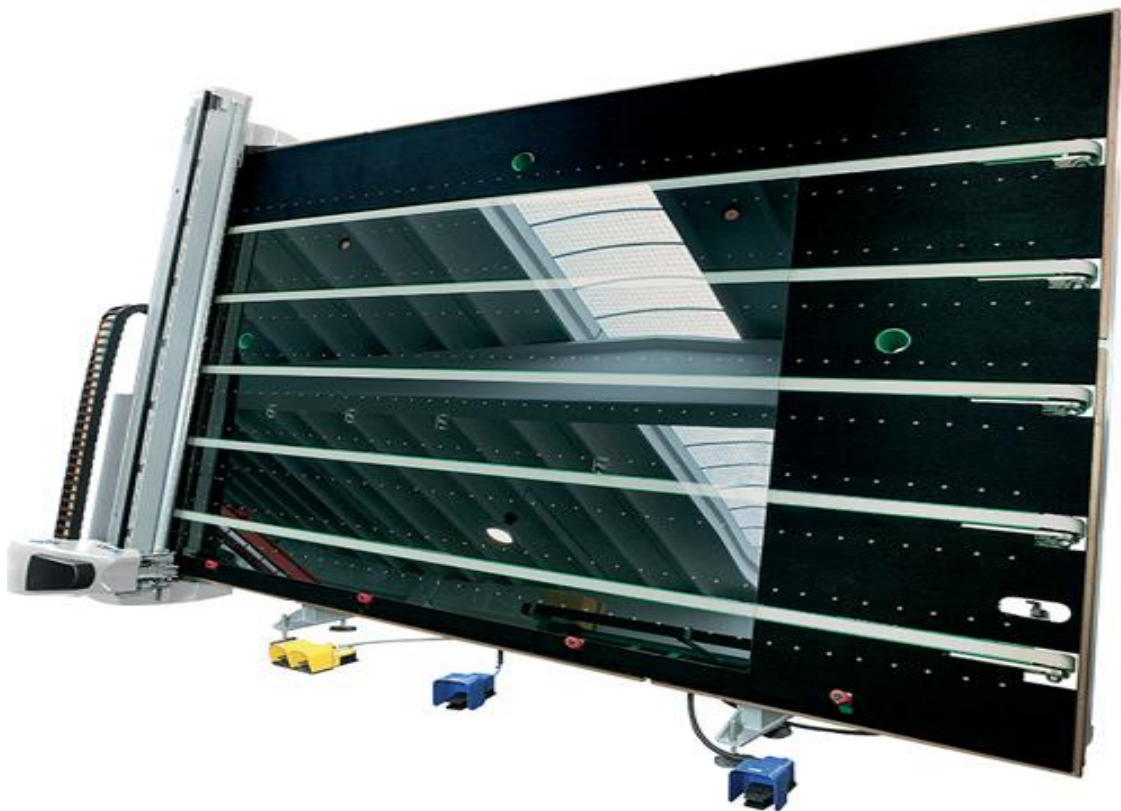
Automatic loading machine, serving 4 Jumbo glass racks (included within the supply) and equipped with:

- Intuitive, user-friendly Windows® based software interface, incorporating:
 - Real-time graphical display of loader status.
 - Real-time stock management.
 - Database containing sheet types and data.
 - Network link to facilitate sheet type loading in accordance with Optimized batch.
- Loading arms fitted with repositionable vacuum suction cups.
- Standard pack depth of up to 1200mm.

As detailed in Bottero Specification FMST6200-10

BOTTERO 363EVO-J

AUTOMATIC FLOAT GLASS CUTTING TABLE WITH LMT EDGE DELETION SYSTEM



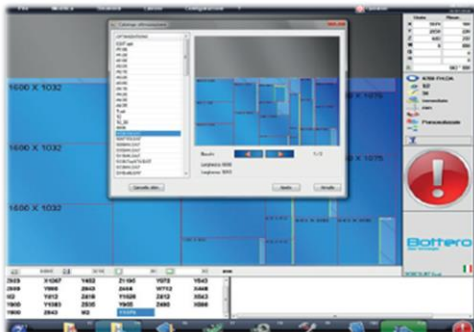
*** Picture provided for illustration purposes only and shows 363BCS-R with Optional Hydraulic Tilting System**

As detailed in Bottero Specification FMST363E-020

Maximum Sheet Dimension: 6100 x 3300mm
Max Glass Thickness: 2-19 mm
Cutting Tolerance: + or - 0.15mm

Machine Equipped With:-

- Air Floatation
- Sheet transport Belts
- Breakout Bars (2X & 1Y)
- LMT Peripheral Wheel Edge Deletion System
- Ultrasonic glass detector for processing non-reflective products
- Bottero shape scanner for processing templates
- On-board Optimization, including shapes
- On-board Mini-Cad for shape manipulation
- On-board Parametric shape library
- Laminated glass cutting cycle
- Automatic cutting pressure selection for different glass thicknesses
- Automatic sheet detection (No manual squaring)
- On-board multi-tasking, user friendly Windows Based interface program
- Comprehensive input/output auto diagnostic software
- Brushless motors (High speed)
- Digital Axes Drive system
- Easily repositionable control desk with Large HD Monitor
- C. E. Safety Barriers



Windows® Based BCMSWIN Software



High Precision Cutting Head & Template Scanner



LMT Edge Deletion System

BOTTERO 548LAM 2.0 - 4900

HIGH PERFORMANCE AUTOMATIC LAMINATED GLASS CUTTING SYSTEM



* Picture provided for illustration purposes only, and shows 548LAM/49, fitted with optional tilting arms.

Key Features:

- Full Automation Package
- High Speed cutting
- New TTS® 8-Axes Fully NC controlled cutting, breakout & separation cycle
- New Innovative PVB Heating System* with blade
- New AD.CD® Clamping stress-free clamping system*
- New glass transport & positioning system
- 100LC Intermediate belt transfer table
- Automatic scrap (trim) removal & disposal
- Cullet Container
- Automatic subplate rotation*
- Shape cutting*
- Contrast wheels for automatic breakout & separation of trims
- Automatic transport of cut size to unloading area
- Intuitive Windows® based dedicated software interface
- On-board Optimization including shapes
- Teamviewer software



* Denotes Bottero Patent

Maximum cutting width:	4900mm.
Cutting speed:	140M/Min
Minimum thickness:	2+0.38PVB+2mm.
Maximum thickness (standard):	8+4.56PVB+8mm.

As detailed in Bottero Specification FMST5480-100

Optional Extras:

Upgrade to High Performance Edge Deletion System on 363EVO-J Float Cutting Section

This upgraded system can accommodate edge deletion wheels of up to a maximum of 60mm in width to producing extra wide grinding in a single pass and also features a modified extraction system and ducting feeding into a free-standing high-power 3-phase industrial vacuum system.

Specifically designed for processing Solar Control softcoated products with TPF film coverings and SGG® EASYPRO



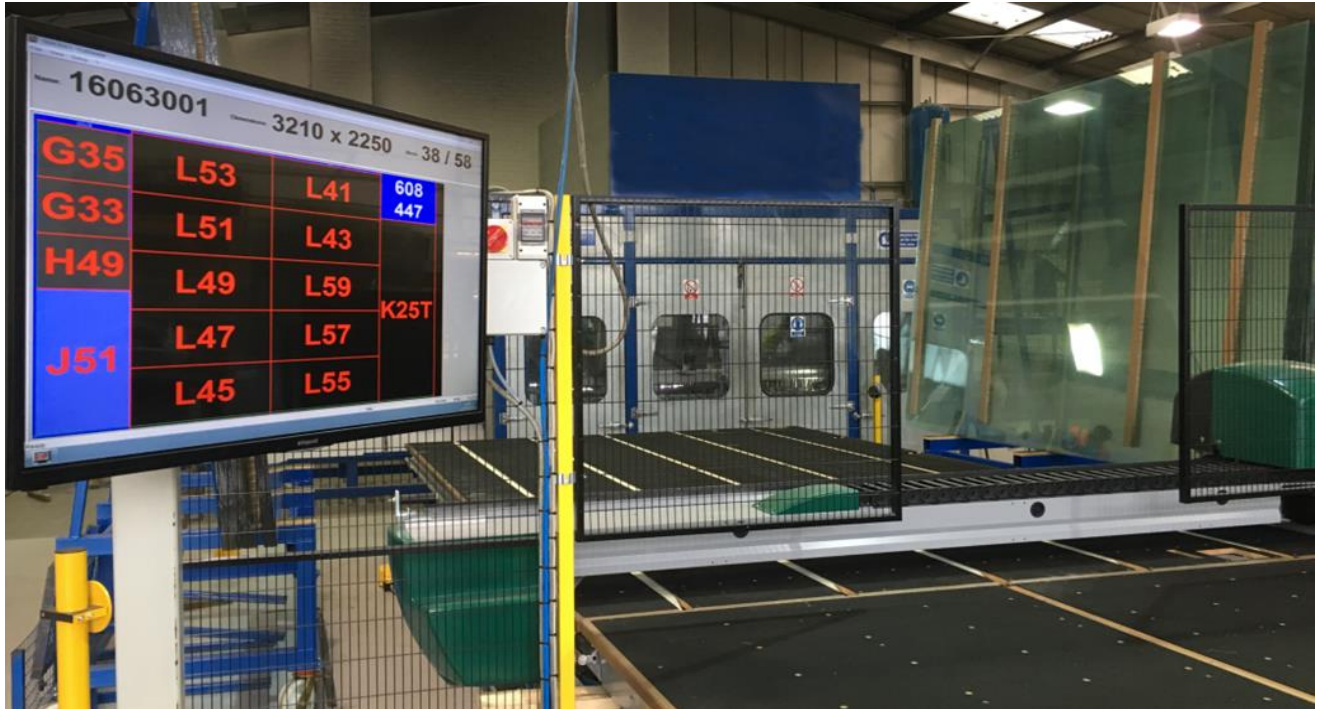
CO2 Laser Marking System on 363EVO-J Float Cutting Section

Automatically marking information on each cut size such as piece dimensions, reference numbers, rack data, certification marks, logo's etc. as contained within and specified by the optimization code.



Cutviewer Display System

Provides an automatic, intelligent, real-time breakout display of the cut sheet, including a large-screen display with customizable options (Piece dimensions, ID Numbers, rack numbers etc.)



Warranty:

- 12 Months Mechanical parts
- 12 Months Electrical parts
- 12 Months Electronic parts
- 12 Months On-site labour

* Valid for 2000 operating hours or for 12 months, whatever comes first, starting from the completion of the installation.

In case the machine will not be installed immediately after the delivery for reasons not due to Bottero's responsibility, the warranty will start, at any rate, one month from the date of delivery on site.

Please note that the aforementioned prices are in Sterling (£), and would be subject to VAT.

Prior to any official order being placed, or acceptance by Bottero, an order acknowledgement document must be signed by both contracted parties.

Ravensby Glass would need to provide suitable offloading equipment and adequate site services such as electrical supply/connection and compressed air.

This quotation is subject to acceptance of our standard terms and conditions, which are also enclosed.

Terms of payment:

10% Deposit with order.
70% On Shipment
20% On Installation / Commissioning

Validity:

30 Days

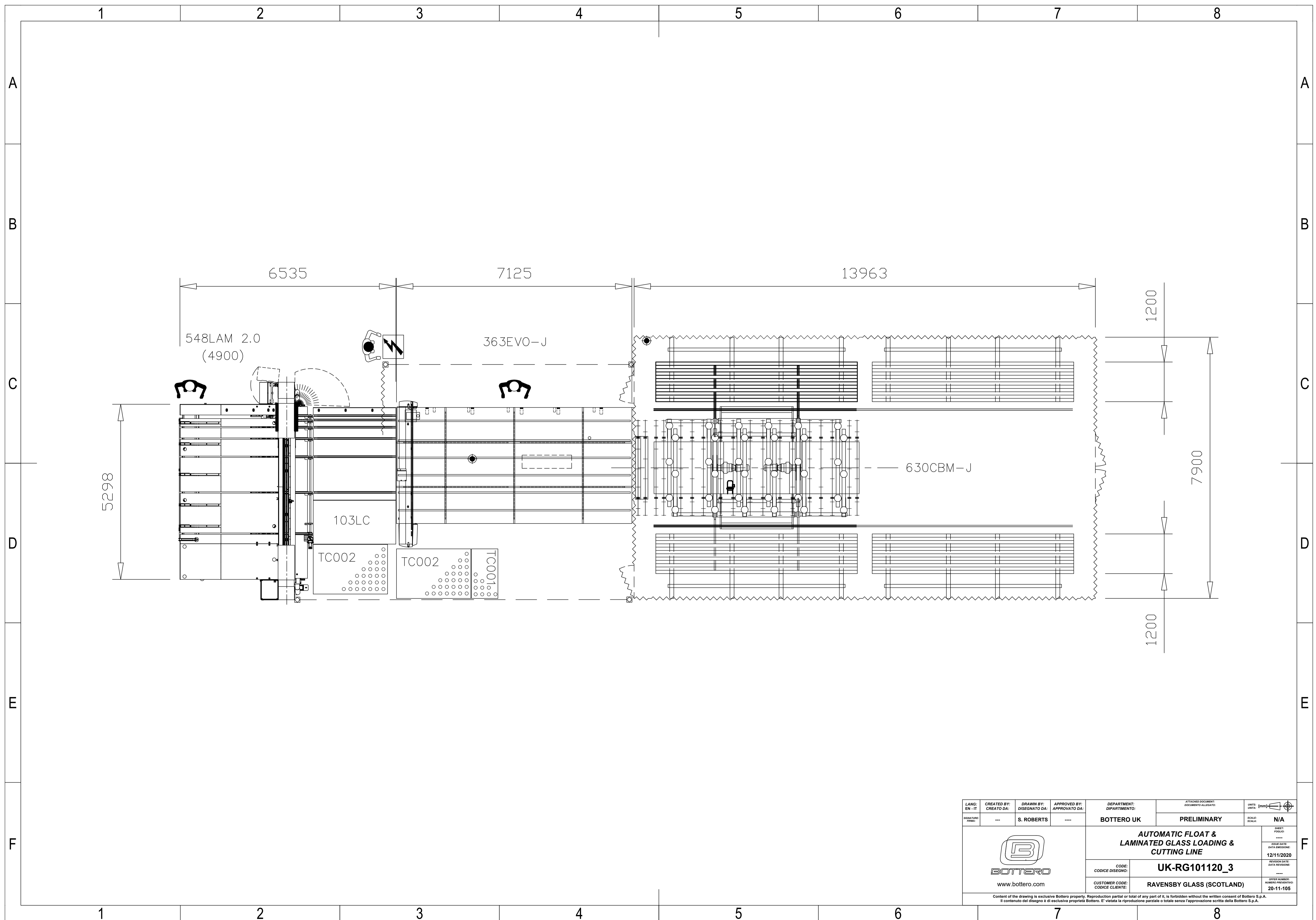
Delivery:


Approximately 20 working weeks from date of order.



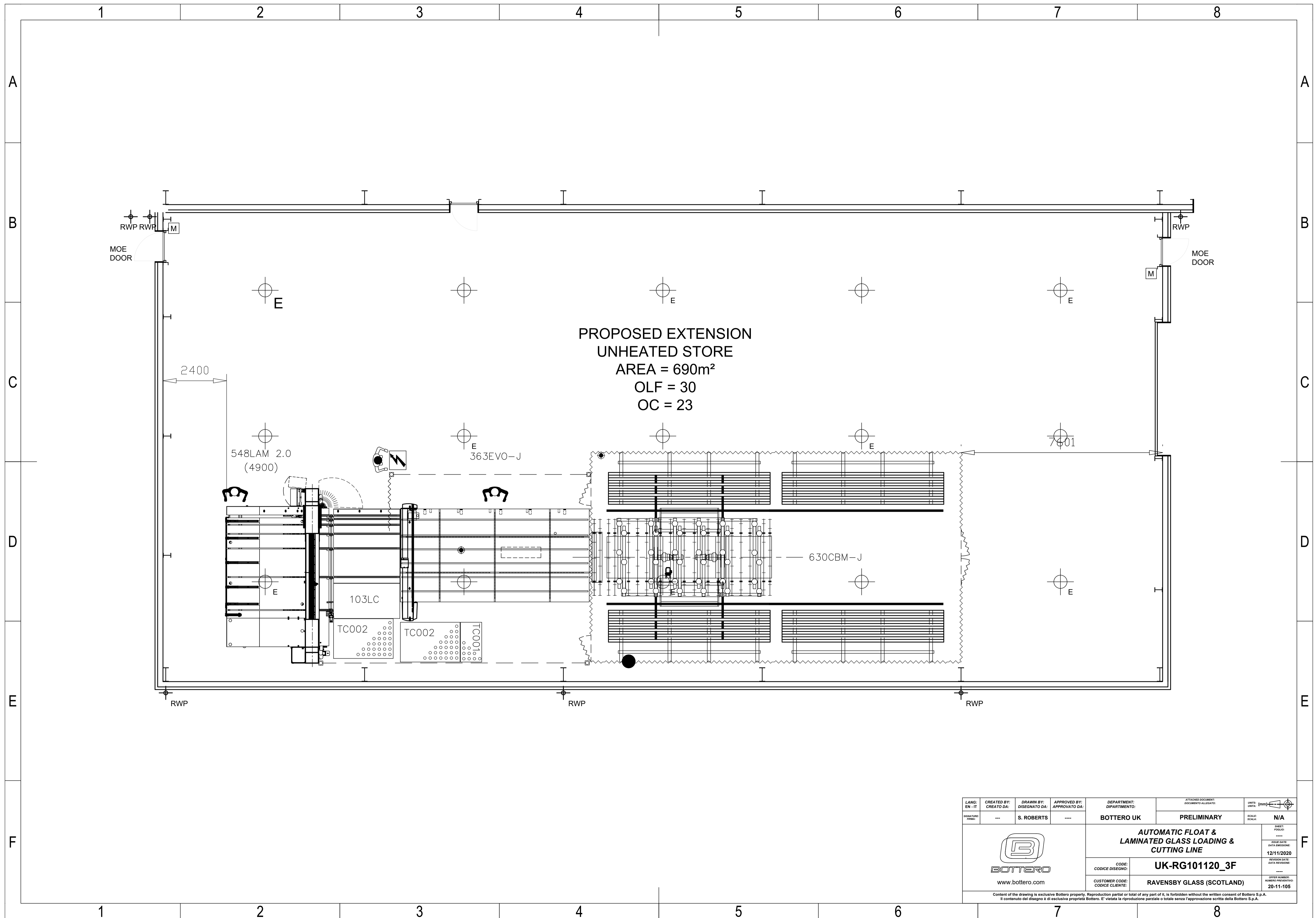
Stephen Roberts

**Area Manager
BOTTERO UK LIMITED**




LANG: EN - IT	CREATED BY: CREATO DA:	DRAWN BY: DISEGNATO DA:	APPROVED BY: APPROVATO DA:	DEPARTMENT: DIPARTIMENTO:	ATTACHED DOCUMENT: DOCUMENTO ALLEGATO:	UNIT: UNITA':	SCALE: SCALA:
SIGNATURE: FIRMA:	---	S. ROBERTS	----	BOTTERO UK	PRELIMINARY	[mm]	N/A
 www.bottero.com				AUTOMATIC FLOAT & LAMINATED GLASS LOADING & CUTTING LINE		SHEET: Foglio:	
						12/11/2020	
				CODE: CODICE DISEGNO:		UK-RG101120_3	
CUSTOMER CODE: CODICE CLIENTE:		RAVENSBY GLASS (SCOTLAND)		OFFER NUMBER: NUMERO PRELIMINARE:		20-11-105	

Content of the drawing is exclusive Bottero property. Reproduction partial or total of any part of it, is forbidden without the written consent of Bottero S.p.A.
Il contenuto del disegno è di esclusiva proprietà Bottero. E' vietata la riproduzione parziale o totale senza l'approvazione scritta della Bottero S.p.A.



PROPOSED EXTENSION
 UNHEATED STORE
 AREA = 690m²
 OLF = 30
 OC = 23

LANG: EN - IT	CREATED BY: CREATO DA:	DRAWN BY: DISEGNATO DA:	APPROVED BY: APPROVATO DA:	DEPARTMENT: DIPARTIMENTO:	ATTACHED DOCUMENT: DOCUMENTO ALLEGATO:	UNIT: UNITA':	SCALE: SCALA:
	---	S. ROBERTS	----	BOTTERO UK	PRELIMINARY	[mm]	N/A
 www.bottero.com				AUTOMATIC FLOAT & LAMINATED GLASS LOADING & CUTTING LINE		SHEET: FOGLIO: ---- ISSUE DATE: DATA EMISSIONE: 12/11/2020	
				CODE: CODICE DISEGNO: UK-RG101120_3F		REVISION DATE: DATA REVISIONE: ----	
				CUSTOMER CODE: CODICE CLIENTE: RAVENSBY GLASS (SCOTLAND)		OFFER NUMBER: NUMERO PRELIMINARE: 20-11-105	
<small>Content of the drawing is exclusive Bottero property. Reproduction partial or total of any part of it, is forbidden without the written consent of Bottero S.p.A. Il contenuto del disegno è di esclusiva proprietà Bottero. E' vietata la riproduzione parziale o totale senza l'approvazione scritta della Bottero S.p.A.</small>							