

John Wilkie Papermill Services Ltd
Maryfield, Manse Lane St Fillans Perthshire UK PH6 2NF
Tel 0044 (0)1764 685267 email jw@wilkiemaryfield.co.uk
www.johnwilkiepms.co.uk

ARJOWIGGINS SCOTLAND LTD
STONEWOOD MILL, BUCKSBURN, ABERDEEN AB21 9AB

**ALL EQUIPMENT NOW AVAILABLE FOR SALE IN CONJUNCTION
WITH HILCO VALUATION SERVICES. www.hilcovs.co.uk**

www.johnwilkiepms.co.uk

Please note:

**All items being sold on behalf of the Joint Administrators of
Arjowiggins Scotland Ltd and Arjowiggins Chartham Mill Ltd.
All assets available for sale subject to availability.**

SECTION A: EXTERNAL STORAGE AREA

Tanks

Three tanks located outside next to blue sheds.

Sheds

**Total of six blue sheds used for storage. One shed containing spare rolls for the four
machines.**

External tanks next to blue sheds

Tanks containing whitening, starch and made-up starch.

SECTION B: SOUTH MILL LOCATION

PAPER MACHINE 8



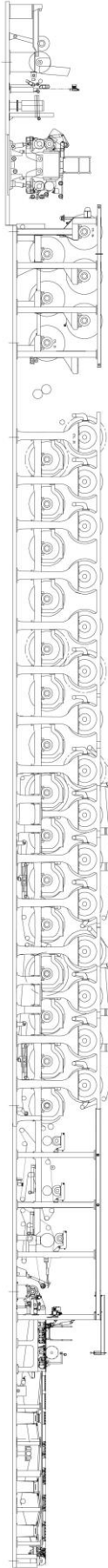
**Directors: John Wilkie, Christine Wilkie B.Sc. B.Acc.(Hons), C.A.
Registered in Scotland: No. SC 254554 Vat No. GB 827444418**

John Wilkie Papermill Services Ltd

Maryfield, Manse Lane St Fillans Perthshire UK PH6 2NF

Tel 0044 (0)1764 685267 email jw@wilkiemaryfield.co.uk

www.johnwilkiepms.co.uk



**Deckle width minimum 1600mm and maximum 2800mm.
Maximum speed 500 m/min, gsm range 45 to 500. Maximum reel weight 6000 Kg.
Coating base papers.
Production 770 t/week. Drive on left from flow box.
Sectional electric drive: DC Emmerson manufacture, year 2015.**

Stock preparation approach flow

**External mild steel starch tank and concrete water tank
Pulp bale line with de wiring station
Wire baler
Hardwood line with stainless steel Grubbens pulper.
Inclined feed conveyor
Softwood line with stainless steel Grubbens pulper.
Both pulpers have low consistency batch operation. V belt drives.
Area covered by 32-ton crane.**

**Titanium make up plant now no longer in use.
ELCO 1250mm roll splitter width on input conveyor to Grubbens broke pulper.
Refining by three JCO-1 refiners, Beloit 4000 series refiner, Jyhavara DD720 and one JCOO deflaker.
Concrete stock chests with vertical agitators
Back water fibre recovery by Holder drum thickener
Various chemical tanks (Nalco, felt cleaning).
Deculator which is no longer in use complete with LD cleaners.
Two DSM slotted screens for fibre water recovery, stainless steel
Concrete machine chests.
Six Nash Vacuum system with 3002 and 2002 pumps.
Jyhavara CI lined pressure screen with rejects to Voith vibrating screen.**

Directors: John Wilkie, Christine Wilkie B.Sc. B.Acc.(Hons), C.A.

Registered in Scotland: No. SC 254554 Vat No. GB 827444418

John Wilkie Papermill Services Ltd

Maryfield, Manse Lane St Fillans Perthshire UK PH6 2NF

Tel 0044 (0)1764 685267 email jw@wilkiemaryfield.co.uk

www.johnwilkiepms.co.uk

Four stage Celleco LD cleaners.
PCC tanks and two in-line stainless filters.

Paper Machine

Wire

Esher Wyess step diffuser flowbox auto profile control, dilution control, stainless steel, complete with dilution control, two holey rolls.

Stainless cantilevered wire part, foils, dandy, vacuum boxes, tail cutter.

Steam box on couch, 18m centres from breast roll to forward drive roll.

Presses

Suction pick up

Sandusky first press

Second plain press

Third smoothing press

Guides Thune design.

Drying section

CI drying cylinders with A/F bearings, CI open gear drive, turbo internal bars, auto lube system, rated at 45 psi pressure operating, diameter 1219mm, sheathen rope rings, Thune automatic felt guides,

Thirty six pre dryers

In-line moisture gauge

Size press horizontal with micro rock and micro mate rolls, pneumatic loading.

Size tanks with two Celleco screens.

After dryers 14 off

Calendar Kuster sack with two Kuster rolls

Hole detector.

ABB scanner measuring profile, gsm, calliper, ash and colour year 2015

IBS tape tail transfer.

Horizontal reel up for 1500mm diameter rolls.

Core/shell extraction unit.

Broke pulper with conveyor, batch operation, in-line Jyhavara roll splitter year 1972 for 1250 mm rolls.

Dandy store

Dandy roll store with washing table and bath.

Directors: John Wilkie, Christine Wilkie B.Sc. B.Acc.(Hons), C.A.

Registered in Scotland: No. SC 254554 Vat No. GB 827444418

John Wilkie Papermill Services Ltd

Maryfield, Manse Lane St Fillans Perthshire UK PH6 2NF

Tel 0044 (0)1764 685267 email jw@wilkiemaryfield.co.uk

www.johnwilkiepms.co.uk

Rewinders



Rewinder six: Jagenberg Vari-Step, eleven slitters, shaftless floor unwind with shaftless rewind. Single motor drive, voltage 415V, reel ejection and lowering table. Auto knife set.3000mm width x 1500mm roll diameter.



Rewinder four: Jagenberg Vari-Dur, fixed unwind, five slitters, number 30.22061. Twin motor drive, shaftless rewind with reel lowering table. 3000mm width x 1500mm roll diameter.

**Core link core cutter
For rewinder trims MOB horizontal baler.**

Coater number 1



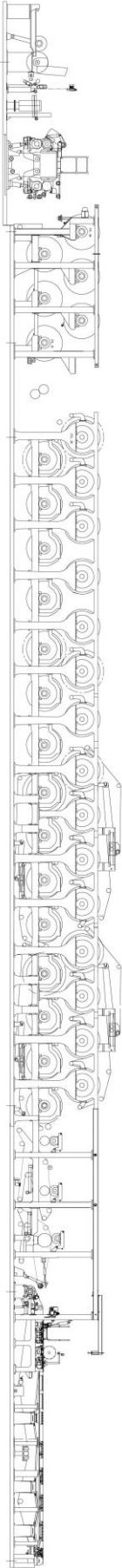
**Directors: John Wilkie, Christine Wilkie B.Sc. B.Acc.(Hons), C.A.
Registered in Scotland: No. SC 254554 Vat No. GB 827444418**

John Wilkie Papermill Services Ltd

Maryfield, Manse Lane St Fillans Perthshire UK PH6 2NF

Tel 0044 (0)1764 685267 email jw@wilkiemaryfield.co.uk

www.johnwilkiepms.co.uk



**Deckle width minimum 1400mm and maximum 2200mm,
Drive right side from unwind.
Maximum speed 350 m/min
Grammage 80-400 gsm.
Maximum reel weight 3000kgs/1400mm diameter
Double side coating by BTG roll coaters. Spooner dryers in basement and upstairs.
In-line Hunt and Moscrop calender and in line soft calender.
Spooner air dryers on basement and second floor.
Flying splice unwind and rewind,
IR dryer after second coater**

Coating preparation plant

**Mixers, colour dye plant upstairs.
Starch cooker Cerstar year 1997.**

Coater laboratory

Thickness, burst, porosity, cob and print testers.

Directors: John Wilkie, Christine Wilkie B.Sc. B.Acc.(Hons), C.A.

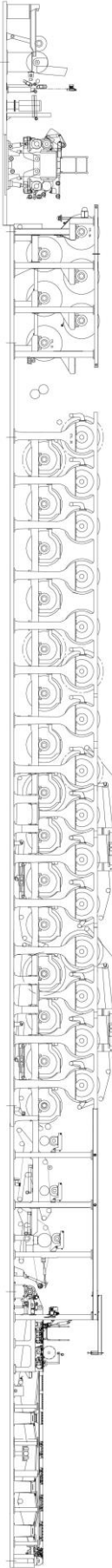
Registered in Scotland: No. SC 254554 Vat No. GB 827444418

John Wilkie Papermill Services Ltd

Maryfield, Manse Lane St Fillans Perthshire UK PH6 2NF

Tel 0044 (0)1764 685267 email jw@wilkiemaryfield.co.uk

www.johnwilkiepms.co.uk



Coating Testing Laboratory

Laboratory two roll calender and complete laboratory coater with dryer and roll coating unit.

Unused Area next to Embossers

Jylhava stainless pulper ex Aylesford Newsprint and Core Link roll splitter. Gearbox for the Aylesford pulper off site for rebuild.

Pemco Wrapper



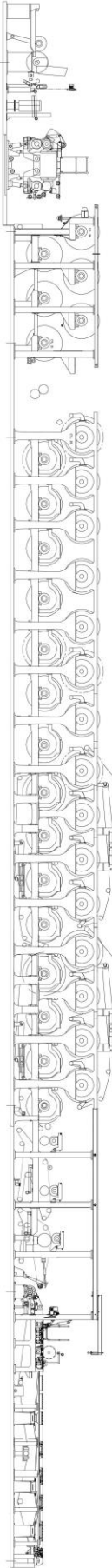
Folio ream wrapper, model 191L, wrapping in paper, choice of auto feed from sheeter or manual feed from pallet. Two accept layboys for pallets with auto pallet changeover.

MSK wrapper



Directors: John Wilkie, Christine Wilkie B.Sc. B.Acc.(Hons), C.A.

Registered in Scotland: No. SC 254554 Vat No. GB 827444418



Shrink wrap,
Pallet sizes 630mm x 890mm minimum, 1220 x 1500mm maximum.
Direct feed from Pemco wrapper also infeed conveyor from fork truck.
ELCO track 1600 mm length maximum

Sheeter 8



EC Will manufacture, type SM-0647, year 1999, minimum cut width 600mm and maximum cut width 1800mm.
Speed 400m/min, gsm range 60 to 600.
Maximum reel weight 5000kgs/1500mm diameter.
Two roll back stands with flying splice. Four slitters. Hole and water mark detectors,
Synchro cut, reject gate, shredder and baler.

John Wilkie Papermill Services Ltd

Maryfield, Manse Lane St Fillans Perthshire UK PH6 2NF

Tel 0044 (0)1764 685267 email jw@wilkiemaryfield.co.uk

www.johnwilkiepms.co.uk

Embossers



Number 7 Embosser: twin head BF Perkins, embossing roll face width 78", alternative up and lower soft/hard rolls so embossing done on both sides of the paper. Year 1996. Reel to reel operation. Various spare rolls.

Number 8 Embosser: Keller Dellen manufacture, 800mm width, roll unwind to floor and lowering table.

Shrink wrap roll wrapper.

SECTION C : NORTH MILL LOCATION

COMMON STOCK PULPER PREPARATION for PAPER MACHINES 10,2 and 9

Three concrete stock storage tanks. Three pulpers feeding three paper machines. Pulper 10 low consistency Grubbens manufacture, mild steel tub, batch operation, bale feed conveyor with de wiring station and wire baler.

Pulper 9 two Grubbens manufacture, low consistency, stainless steel tub, batch operation, modern 27" rotor.

Pulper 2 Morden pulper stainless steel with BCI pulper tub.

All pulpers with floor mounted pulp conveyors feeding at thirty-degree angle into top of the pulpers.

Directors: John Wilkie, Christine Wilkie B.Sc. B.Acc.(Hons), C.A.

Registered in Scotland: No. SC 254554 Vat No. GB 827444418

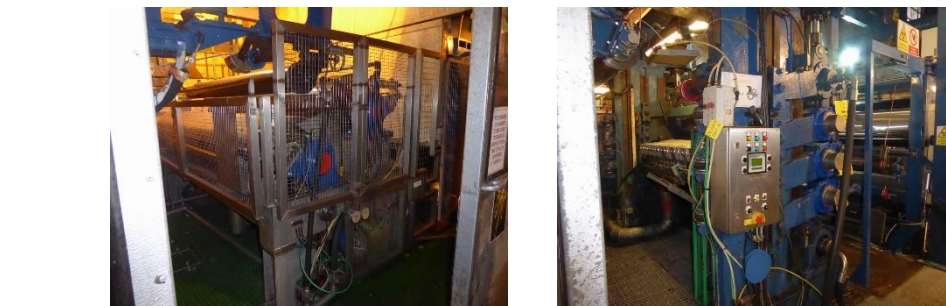
John Wilkie Papermill Services Ltd

Maryfield, Manse Lane St Fillans Perthshire UK PH6 2NF

Tel 0044 (0)1764 685267 email jw@wilkiemaryfield.co.uk

www.johnwilkiepms.co.uk

PAPER MACHINE 10



Minimum deckle 1200mm, maximum deckle 2150mm.

Maximum speed 300 m/min, gsm: 50 – 170.

Maximum reel weight 3000 kgs, production 340 t/week.

Drive on left from flowboxes. Colour kitchen. DC sectional electric drive, four concrete chests, two stainless stock chests with side entry agitators, Refiners JCO-1, two on hardwood and one refiner on softwood. Wet end retention system for paper machines. Celleco three stage LD cleaners, Lamort pressure screen, Finckh vibrating screen for screen rejects. Four Nash vacuum pumps. Back water fibre recovery by Holder drum thickener.

Bertrams shake motion on wire, Holder flowbox stainless steel, with profile control, stainless cantilevered wet end, breast roll to forward drive roll centres 15 mtrs, dandy roll with drive, auto cross tail cutter, bagley box tail transfer, two press sections, two press sections,

Dryers in two sections 1250mm diameter on A/F bearings, first section 22 dryers, inclined size press with Celleco screens and 8 after dryers.

Kuster calendar with five rolls, top and bottom kuster rolls.

ABB scanner for moisture, profile, gsm, ash. Year 2015.

Warburton horizontal reel up for 1500mm diameter rolls.

Broke pulper stainless steel with conveyor. Esher Wyess E1K deflaker

Filters for size press

Two PVA tanks..

AVBE starch cooker.

Directors: John Wilkie, Christine Wilkie B.Sc. B.Acc.(Hons), C.A.

Registered in Scotland: No. SC 254554 Vat No. GB 827444418

John Wilkie Papermill Services Ltd

Maryfield, Manse Lane St Fillans Perthshire UK PH6 2NF

Tel 0044 (0)1764 685267 email jw@wilkiemaryfield.co.uk

www.johnwilkiepms.co.uk

PAPER MACHINE 9



This paper machine has twin wire sections. One wire in the basement. Sectional electric drive, year 2006, Part of dryer drive line shaft also driving the calendar.

Drive on left from the flowbox. Deckle 1430mm minimum and 2280mm maximum, maximum speed 250 m/min, 80 to 500 gsm, maximum roll weight 4500kgs, production 560t/week.

Approach flow two Jylhavara DD7/20 refiners, broke chest, virgin stock chest, two concrete machine chests, colour kitchen, deflaker: Jylhavara JF75 in basement, Bottom wire pressure screen Jylhavara with rejects going to an Esher Wyess vibrating screen, Top wire pressure screen rejects to same vibrating screen. Two Nash vacuum pumps type SC7.

Directors: John Wilkie, Christine Wilkie B.Sc. B.Acc.(Hons), C.A.

Registered in Scotland: No. SC 254554 Vat No. GB 827444418

John Wilkie Papermill Services Ltd

Maryfield, Manse Lane St Fillans Perthshire UK PH6 2NF

Tel 0044 (0)1764 685267 email jw@wilkiemaryfield.co.uk

www.johnwilkiepms.co.uk

Bottom wire 13.5 m centres between breast roll and forward drive roll. Bertrams shake motion on bottom wire. Holder flowbox with auto profile control, wire has part knock down frame and cantilevered section at foil and vacuum boxes. Sheet from bottom wire joined at first press and starch spray to assist sheets to join. Both top and bottom wires with auto tail cutters working in unison.

Top wire approach Finckh pressure screen, Fibre recovery by Holder drum thickener. Three stage Celleco LD cleaner system.

Top wire Holder flowbox, stainless steel with auto profile control. Wire section cantilevered, stainless steel and with a forward drive roll. Centres between breast roll and forward drive roll 12 m.

Three press sections pneumatic loading, Thune auto guides, third press is a marking press with various patterns of covers which can be fitted.

Drying sections with 36 drying cylinders, 1250mm diameter, 45 psi operating pressure, A/F bearings, Thune auto guides, in line vertical size press, five roll Kuster calender stack with top and bottom Kuster rolls.

ABB cross machine scanner, year 2015, measuring gsm, profile, moisture, ash and colour.

IBS tape transfer system.

Warburton drum reel up horizontal design for 1500mm diameter rolls.

Vacuum system comprises of five Nash vacuum pumps.

Machine broke pulper with conveyor, Batch operated Grubbens stainless steel pulper with conveyor and in line ELCO roll splitter for 1500mm width and 1500mm diameter rolls.

GREEN LINE

Two cranes, roll lift from lower level, roll up ender feeding roll conveyor. Green line pulper with conveyor, in line ELCO roll splitter for 1500mm x 1500mm rolls. Grubbens stainless steel L/C batch pulper. Jylhava deflaker model E1.

PAPER MACHINE 2



Directors: John Wilkie, Christine Wilkie B.Sc. B.Acc.(Hons), C.A.

Registered in Scotland: No. SC 254554 Vat No. GB 827444418

John Wilkie Papermill Services Ltd

Maryfield, Manse Lane St Fillans Perthshire UK PH6 2NF

Tel 0044 (0)1764 685267 email jw@wilkiemaryfield.co.uk

www.johnwilkiepms.co.uk



Deckle 1200mm minimum and 1950 mm maximum, max speed 200m/min, gsm 60 - 300 gsm, maximum reel weight 2500 kgs. Lineshaft drivet with exception press sections.

Approach flow hardwood and soft wood stainless steel cheste.

Two JCO-1 refiners on hardwood and one JCO-1 on softwood, stainless steel security fibre mixing tanks. Finch pressure screen, Celleco three stage LD cleaners. Fibre recovery by Holder drum thickener.

Nash vacuum pump for flat boxes, broke chest stainless steel, further three Nash vacuum pumps.

Bertrams shake motion on breast roll, Esher Wyess step diffuser stainless flowbox, auto slice control, centres from breast roll to forward drive roll 18 mtrs, dandy with drive, auto cross trim cutter, two press sections, dryer rated at 45 psi working pressure, 1250mm diameter, central oil system on cylinder A/F bearings.

Sixteen pre-dryers, inclined size press with stainless steel frame, with Cellier screens, six after-dryers. ABB cross machine scanner measuring moisture, profile, gsm, year 2014. Kuster calender stack with four rolls of which one Kuster roll.

Warburton horizontal reel up for 1500mm diameter. Core removal system from reel shells.

Grubbens broke pulper stainless steel with Esher Wyess E1K deflaker.

Dye plant for use with PM2 and PM10 paper machines.

MIRACLE MILL

PLC make up with stainless tank

PAC and OBA plastic tanks

Outside stainless tank for Alum

Directors: John Wilkie, Christine Wilkie B.Sc. B.Acc.(Hons), C.A.

Registered in Scotland: No. SC 254554 Vat No. GB 827444418

John Wilkie Papermill Services Ltd

Maryfield, Manse Lane St Fillans Perthshire UK PH6 2NF

Tel 0044 (0)1764 685267 email jw@wilkiemaryfield.co.uk

www.johnwilkiepms.co.uk

REWINDER 2



Jagenberg Varidur rewinder, floor pick upon unwind, 8 slitters, machine number 30.22209, shaftless rewind, twin motor drive. roll width 450mm to 2850mm, roll diameter 1500mm, 1000 m/min, 50 to 500 gsm. Shaftless Atlas floor pick up unwind.

SHEETER 5



ECH Will sheeter cutting to register, synchro cut, four roll unwind, sheet width 550 to 2210 mm, sheet length 1100mm x 1600mm, speed 300 m/min, gsm range 45 to 500, roll diameter 1600 mm. Model type FFS 240/230, year 1992, reject gate six slitters, twin layboys with auto pallet change over.

Directors: John Wilkie, Christine Wilkie B.Sc. B.Acc.(Hons), C.A.

Registered in Scotland: No. SC 254554 Vat No. GB 827444418

John Wilkie Papermill Services Ltd

Maryfield, Manse Lane St Fillans Perthshire UK PH6 2NF

Tel 0044 (0)1764 685267 email jw@wilkiemaryfield.co.uk

www.johnwilkiepms.co.uk

SHEETER 3



ECH Will sheeter cutting to register, sychro cut, four roll unwind, sheet width 550 to 2210 mm, sheet length 1100mm to 1600mm, speed 300 m/min, gsm range 45 to 500, roll diameter 1600 mm. Model type FFS 230, number 7649, year 1989, reject gate, six slitters, twin layboys with auto pallet change over.

SHEETER 7



Masson Scott dead knife sheeter, simplex model, fly and dead knife cut, twin sided floor pick up Langston shaftless type, minimum sheet size 400 x 640mm, maximum sheet size 700 x 1000mm, maximum roll width 2130mm and minimum roll width 700mm, minimum gsm 500, max roll diameter 1500mm.

Directors: John Wilkie, Christine Wilkie B.Sc. B.Acc.(Hons), C.A.

Registered in Scotland: No. SC 254554 Vat No. GB 827444418

John Wilkie Papermill Services Ltd

Maryfield, Manse Lane St Fillans Perthshire UK PH6 2NF

Tel 0044 (0)1764 685267 email jw@wilkiemaryfield.co.uk

www.johnwilkiepms.co.uk

SHEETER 4 CUT TO REGISTER A4/A3



ECH Will sheeter SLK 480U, year 1989, number 07646, six A4 pockets, cut to register, reject gate with shredder. Two accept lines for reams wrapping in paper or plastic.

Plastic wrap by an **Involvo Wrapper** with shrink wrap type PTF28mt.

Sizes 210mm x 297mm

216mm x 279mm

203mm x 330mm

Minimum height 30mm and maximum height 90mm.

Paper wrap by a **Pemco Wrapper** model 66R number P-3405

Sizes 210mm x 297mm

420mm x 297mm

216mm x 279mm

430mm x 305mm

Minimum height 30mm and maximum height 90mm.

In-line labellers, accumulator and **Pemco** box line model PTF20L, number 961950.

Box strapping machine

Boxes loaded by robot onto auto pallet stacker the plastic wrapped on Auto 60 LADYPAK rotary turntable with film wrapper.

Directors: John Wilkie, Christine Wilkie B.Sc. B.Acc.(Hons), C.A.

Registered in Scotland: No. SC 254554 Vat No. GB 827444418

John Wilkie Papermill Services Ltd

Maryfield, Manse Lane St Fillans Perthshire UK PH6 2NF

Tel 0044 (0)1764 685267 email jw@wilkiemaryfield.co.uk

www.johnwilkiepms.co.uk

GUILLOTINE 1



Wollenburg SCC-2 guillotine TYPE 180, NUMBER 2926-006, with air float table, light guarding, power back fence, auto ream stacker and de stacker.

BALERS FOR SHEETERS and REWINDERS



Four NEU auto tying balers:

Cutter 5 baler year 1999, model Maren 720 E.

Cutter 3 and 2 model 72 number 996118.

Cutter 3 model Maren 72 year 1997.

Cutter 4 model Maren 720E year 1997.

Directors: John Wilkie, Christine Wilkie B.Sc. B.Acc.(Hons), C.A.

Registered in Scotland: No. SC 254554 Vat No. GB 827444418

COMPRESSOR



Atlas compressor model GA 353-75 with Atlas air dryer.

GUILLOTINE 2



Polar guillotine model 155XT, number 7921103, with light guarding, air float table, power back fence, year 2010, auto stacker and de stacker.

John Wilkie Papermill Services Ltd

Maryfield, Manse Lane St Fillans Perthshire UK PH6 2NF

Tel 0044 (0)1764 685267 email jw@wilkiemaryfield.co.uk

www.johnwilkiepms.co.uk

WRAPMATIC NUMBER 1



Folio ream wrapper, model GRM,, hot melt gluing labeller, paper wrapping from four roll carousel roll carriage.

Manual ream feed, twin accept layboys with auto pallet change over.

Minimum sizes 500mm x 560mm

Maximum sizes 1000 x 1250mm

Minimum height 25mm parcel

Maximum height 75mm parcel

Wrapping 100 gsm and upwards

WRAPMATIC NUMBER 2



Folio ream wrapper, model GRM, , hot melt gluing labeller, paper wrapping from four roll carousel roll carriage.

Manual ream feed, twin accept layboys with auto pallet change over.

Minimum sizes 400mm x 560mm

Maximum sizes 1000 x 1250mm

Minimum height 25mm parcel

Maximum height 83mm parcel

Wrapping 45 gsm and upwards

Directors: John Wilkie, Christine Wilkie B.Sc. B.Acc.(Hons), C.A.

Registered in Scotland: No. SC 254554 Vat No. GB 827444418

John Wilkie Papermill Services Ltd

Maryfield, Manse Lane St Fillans Perthshire UK PH6 2NF

Tel 0044 (0)1764 685267 email jw@wilkiemaryfield.co.uk

www.johnwilkiepms.co.uk

PALLET TURNER



**Premier pallet turner type FS DC B 2000.
Maximum pallet weight 2000kgs. Year 2017.**

ROLL WRAPPER



OMEGA plastic roll wrapper with turntable for 1500 x 1500 mm rolls.

ROLL UPENDER

For feeding onto roll conveyors (two conveyors).

MSK SHRINK WRAP



**Conveyors feed from wrapper to pallet shrink wrap unit.
Pallet size minimum 630mm x 890 mm and maximum 1220mm x 1500mm**

Directors: John Wilkie, Christine Wilkie B.Sc. B.Acc.(Hons), C.A.

Registered in Scotland: No. SC 254554 Vat No. GB 827444418

EMBOSSERS



Two sheet fed embossers, width 32" with carousels containing six steel embossing rolls. Bottom paper filled roll, manufacture Band A, auto sheet feed system from and on to pallets. Spare embossing rolls.

GUILLOTINE



Shop guillotine Wollenberg , model MCS-2TV light guard, power back fence.

John Wilkie Papermill Services Ltd

Maryfield, Manse Lane St Fillans Perthshire UK PH6 2NF

Tel 0044 (0)1764 685267 email jw@wilkiemaryfield.co.uk

www.johnwilkiepms.co.uk

SECTION D : LOCATION BOILER HOUSE

Four package boilers with single burners, Babcock manufacture, Model number 1400, 30,000 lbs/hr, pressure 225 psi.

Foster Wheeler boiler, type Senior FW Thermal, year 1989, design pressure 25 bar, test pressure 37.5 bar, 55 t/hr.

Bruce Peebles steam turbine rebuilt, number 81722, type 1510CACW, 3380 KVA, 11,000 volts, 177.5amp, rpm 1500, 3 PH and 50 cycles.

Alternator 2.7 MW, 11 KV.

Atlas Copco compressor model ZR. Listed as number two compressor.

CHP



Brush generation, 8.9 MW, type SPA, year 1989, 11,000 volts, 570.2 amps, 3 phase/50 cycle, 1500 rpm. Gas Turbine Asea Brown Boveri, supplier Solar Turbines Europe model MARS 100 and serial number 0138M ID no EM14000-59D. Gearbox between turbine and generator: SOM manufacture.

EFFLUENT PLANT



Plant is mainly concrete settlement and biological treatment tanks. Sludge thickening by two stainless steel DWT Engineering belt presses.

Directors: John Wilkie, Christine Wilkie B.Sc. B.Acc.(Hons), C.A.

Registered in Scotland: No. SC 254554 Vat No. GB 827444418

John Wilkie Papermill Services Ltd

Maryfield, Manse Lane St Fillans Perthshire UK PH6 2NF

Tel 0044 (0)1764 685267 email jw@wilkiemaryfield.co.uk

www.johnwilkiepms.co.uk

Sludge thickened to approximately 35%. Sludge transfer by screw conveyor to external sludge storage area.

PILOT PAPER MACHINE



Manufacturer Papierfabrik GMBH, Osnabruck.

Wet end with open flowbox, single wire section with deckle straps.

Press section, dryer section, size press, after dryers, calender and reel up.

All mounted on main frames with drives.

Lamort laboratory pulper and Jones conical refiner.

TWO DANDY STORES

Stores contain numerous dandies and location is near to main office.

CHURCHILL ROLL GRINDER

Serial number S31021, bed length 6 mtrs, serviced 6/6/22,
Tolerance 0.0028",

Please note that at Stoneywood with the site having no electrical power or forklift trucks (or Forklift truck drivers) so buyers need to make provisions for this.

THIS INFORMATION IS THE TITLE OF JOHN WILKIE PAPERMILL SERVICES LTD AND SHOULD NOT BE COPIED OR FORWARDED TO A THIRD PARTY WITHOUT CONSENT.

FOR YOUR GENERAL INFORMATION WE HAVE TO INTIMATE THE FOLLOWING TO YOU:

This schedule has been prepared solely for the guidance of prospective purchasers and does not constitute (and at no time shall be deemed to constitute) an offer or contract or any part of an offer or contract.

Directors: John Wilkie, Christine Wilkie B.Sc. B.Acc.(Hons), C.A.

Registered in Scotland: No. SC 254554 Vat No. GB 827444418

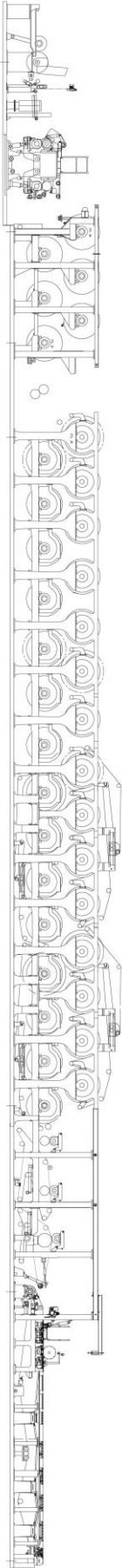
John Wilkie Papermill Services Ltd

Maryfield, Manse Lane St Fillans Perthshire UK PH6 2NF

Tel 0044 (0)1764 685267 email jw@wilkiemaryfield.co.uk

www.johnwilkiepms.co.uk

Additionally, no warranty is given to the accuracy of any measurements, specifications or other details whatsoever given within this schedule. Whilst every reasonable effort has been made to verify any statement, description, or comment made within this schedule, for the avoidance of doubt it is emphasised that the purchaser must make their own enquiries and satisfy themselves.



Directors: John Wilkie, Christine Wilkie B.Sc. B.Acc.(Hons), C.A.

Registered in Scotland: No. SC 254554 Vat No. GB 827444418