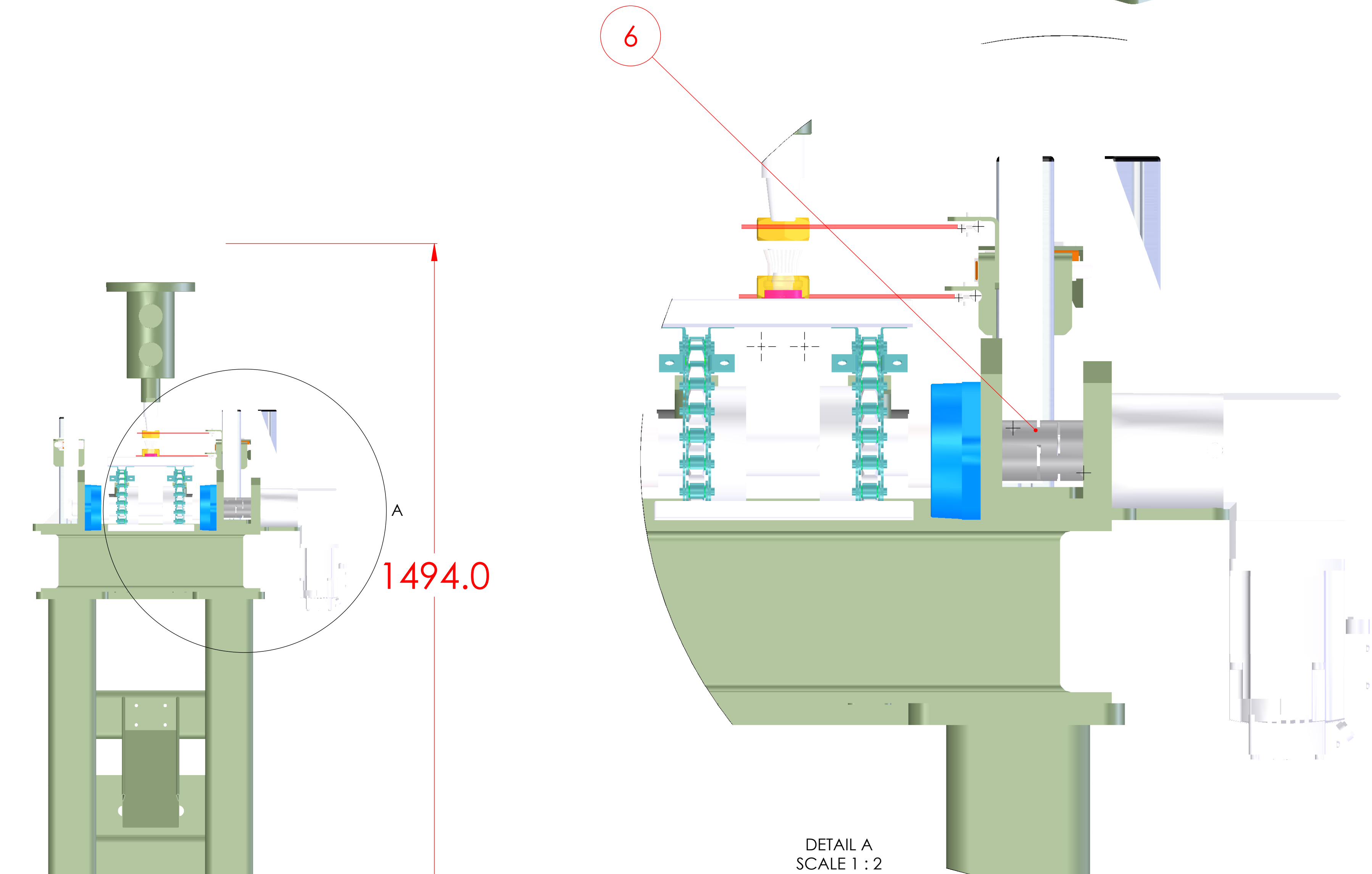
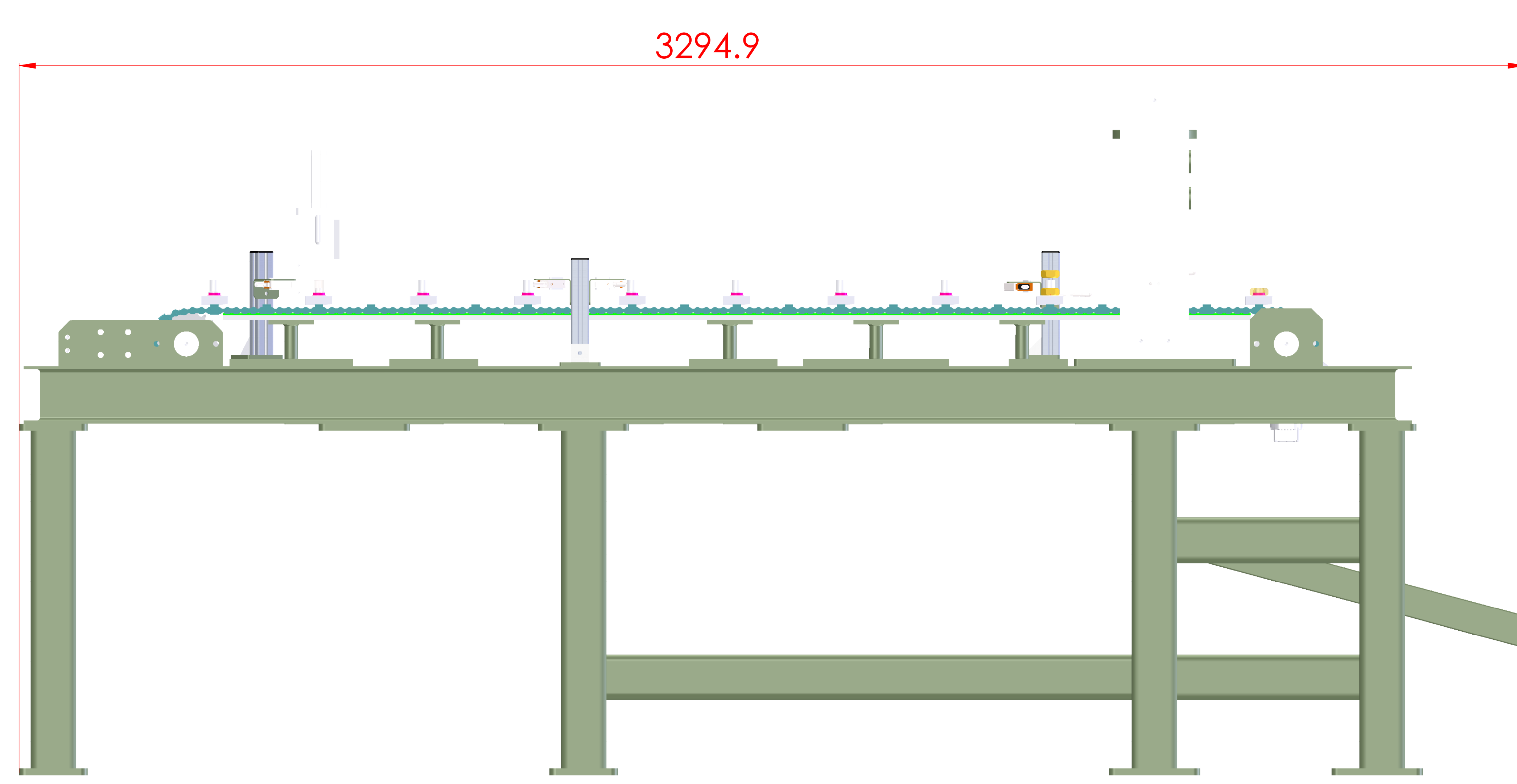
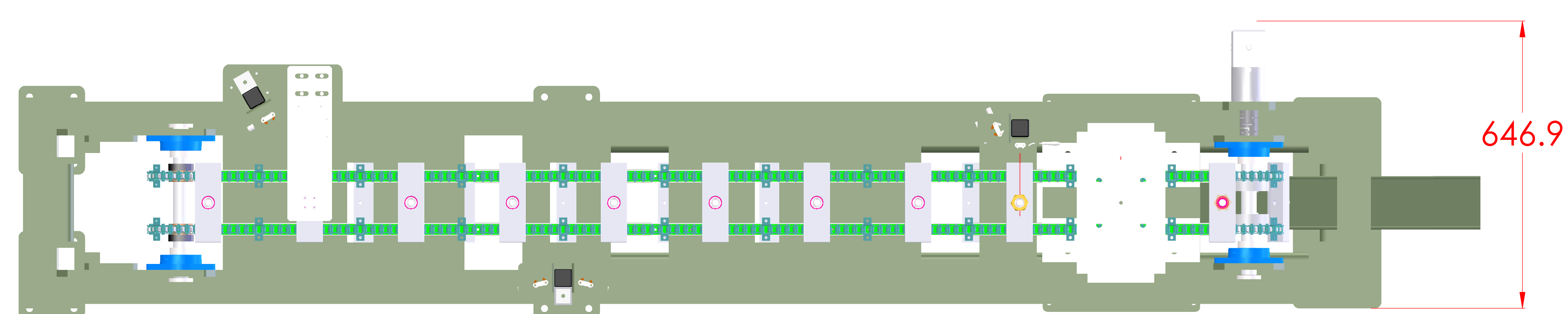
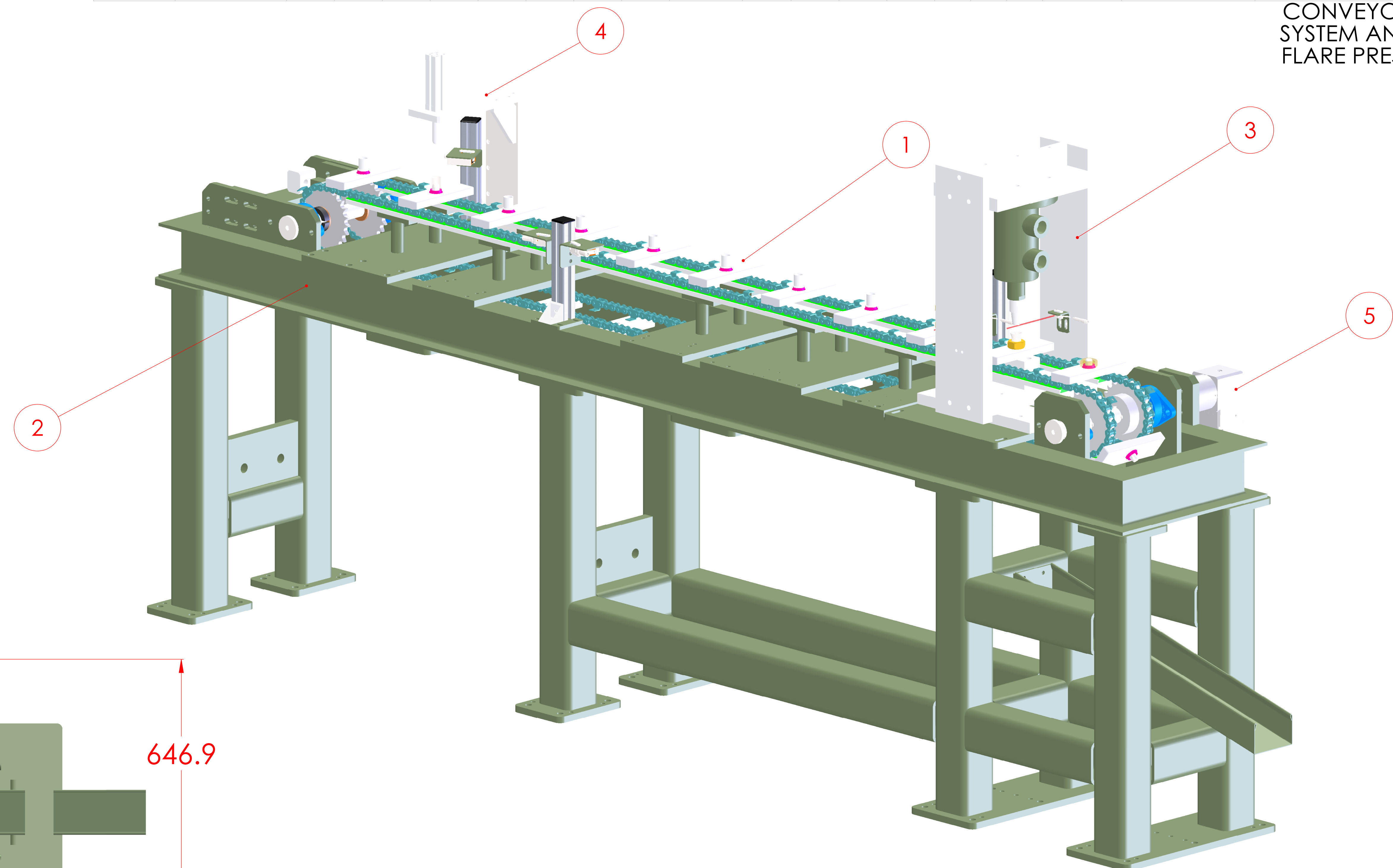


ITEM NO.	PART NUMBER	DESCRIPTION	QTY.
1	J6754-A002-A001-01-CONVEYOR ASSEMBLY	CONVEYOR ASSEMBLY	1
2	J6754-A002-A002-01-FRAMEWORK ASSEMBLY	CONVEYOR FRAMEWORK ASSEMBLY	1
3	J6754-A002-A003-01-FINAL PRESS ASSEMBLY	FLARE PRESS ASSEMBLY	1
4	J6754-A002-A004-01-PNEUMATIC DROP CYLINDER	PNEUMATIC DATUM DROP CYLINDER	1
5	HMK SERVO MOTOR - Quote Q109014NW_DR_Q1_V2	HMK SERVO MOTOR - Quote Q109014NW_DR_Q1_V2	1
6	R+W - EK2_20_A_19_PFN_25_PFN_3	COUPLING	1

REMOVE ALL BURRS & SHARP EDGES TO ISO 2553 (2013)	UNLESS OTHERWISE STATED Dimensions are in Millimetres Tolerances to BS4500	Linear Tolerances Unless Otherwise Stated	Angular Tolerance	Fabrication Tolerances Unless Otherwise Stated	Machining Symbols	THIRD ANGLE PROJECTION	DO NOT SCALE WORK TO DIMENSIONS	J6754-A002-A001-01-CONVEYOR SYSTEM AND FLARE PRESS
		0.5 up to 3	0.5	0.5 up to 100	Rough Machine			
		Over 3 up to 6	0.05	Over 100 up to 500	Fin Machine			
		Over 6 up to 30	0.08	Over 500 up to 1000	Grinding			
		Over 30 up to 120	0.1	Over 1000 up to 2000				
		Over 120 up to 315	0.15	Over 2000				
		Over 315 up to 1000	0.2					
		Over 1000 up to 2000	0.5					
		Over 2000	1.00					
			±0.5°					



REMOVE ALL BURRS AND SHARP EDGES WITH MINIMUM OF 0.5x45°

LB Foster
Automation

THE MIDWAY LENTON NOTTINGHAM ENGLAND
TEL: +44 (0)115 8400 500 FAX: +44 (0)115 8405 959
www.lbfoster-automation.co.uk

© COPYRIGHT
This drawing is copyright of LB Foster Automation. A trading name of LB Foster Rail Technologies (UK) Ltd. It must not be reproduced in any way or used for manufacture or otherwise disclosed without the prior written consent of the company. Any approved copies of this drawing must include the full wording of this legend.

DRAWN	PRINCE ANSAH
CHECKED	
DATE	28/09/2018
ORIGINAL DWG SIZE	A0 (841 x 1189)

CONVEYOR SYSTEM AND FLARE PRESS

REVISIONS			
REV.	DESCRIPTION	DATE	APPROVED

NEXT ASSEMBLY
JXXXX-AXXX
DRAWING No. REV
J6754-A002-A001-01-CONVEYOR SYSTEM AND FLARE PRESS