

Porsche Motorsport – Racecar Service Information (PMRSI)

Bitte registrieren Sie Sich und Ihr Fahrzeug im PMRSI um Zugang zu allen relevanten Informationen um den Porsche 718 Cayman GT4 Clubsport zu erhalten.

Sollten Sie bereits registriert sein, fügen Sie Ihr neues Fahrzeug bitte unter „Mein Profil“ hinzu.

Folgende Informationen sind verfügbar:

- Technisches Handbuch
- Ersatzteilkatalog
- PI-Toolset
- PI-Toolbox
- ICD Setup
- Infos zu technischen Schulungen
- Neuste technische Informationen

Durch die ständige Optimierung unserer Produkte sind auf dieser Plattform regelmäßige Aktualisierungen verfügbar.

Link zur Anmeldung:

<https://motorsport.porsche.de>

Porsche Motorsport – Racecar Service Information (PMRSI)

Please register yourself and your racecar at the PMRSI to get access to all relevant information regarding the Porsche 718 Cayman GT4 Clubsport.

In case you are already registered, please add your new racecar at the "My profil" area.

The available information include the following:

- Technical manual
- Spare parts catalogue
- PI-Toolset
- PI-Toolbox
- ICD Setup
- Information regarding technical training
- Latest technical information

Due to the constant improvement of our products, frequent updates will be available on this platform.

Link to register:

<https://motorsport.porsche.com>



CERTIFICATE OF CONFORMANCE

Aero Tec Laboratories Ltd. certify that at time of despatch this new
ATL Fuel Bladder conforms with **FIA Standard FT3-1999**

*This certificate cannot be used in isolation as means of compliance.
The validity of the installed product must be verified from the FIA label & associated hologram
attached to the fuel bladder.*

*Conformance shall become null and void if the fuel bladder has been subjected to accident,
negligence, disassembly, alteration, abuse, misuse, improper installation or unsuited uses.*

Serial No.	810756968	FIA Hologram No.	AK 56761
Date of Manufacture	October 2019	Material Homologation No	ATL-810-C
Not Valid After	October 2024	ATL Part No.	SK-ZJ-021
Certificate Print Date	29/10/2019		

Authorised Signature:

AERO TEC LABORATORIES LTD.

Registered Office Address: ATL Technology Centre, Denbigh Road, Bleichley, Milton Keynes, MK1 1DF. Company Registration Number: 3490552
Tel: +44 (0)1908 351700 Fax: +44 (0)1908 351750 Web: www.atltd.com Email: atl@atltd.com

Datenblatt / data sheet 982 GT4 CS Competition, MJ L

Kunde/customer	PORSCHE CARS GREAT BRITAIN Ltd.	
Termin/date	29.01.2020	
Fahrgestell-Nr./VIN	WPO ZZZ 98 Z LK299654	
Fahrzeugaufbau/vehicle body		
Karosserie/body		
Rohkarosse/Body	718 GT4 CS	
Farbe/colour	Purewhite	
Aggregate/units		
Motor-Typ/engine type	MA125	
Getr.-Typ/gearbox type	CG206	
Optionen/optional packages		
M-Nr.	Competition (093)	
Getriebeübersetzung/gear Ratios		
Übersetzung/gear ratio		
K.-Tellerrad/pinion & ring		
1. Gang/gear		
2. Gang/gear		
3. Gang/gear		
4. Gang/gear		
5. Gang/gear		
6. Gang/gear		
Reifen/tyres		
Reifen-Typ/tire type	Michelin/Transport	
Kenn-Nummern/identification numbers		
Fahrzeug-Nummern/vehicle numbers		
Käfig-Nr./roll cage #	CP#356#	
Motor-Nr./engine #	DP W000870	
Getriebe-Nr./gearbox #	2002272	
Tank-Nr./fuel cell #	810756968	
Serien-Nummern/serial numbers		
M.-Steuergerät/ECU #		
Display/ICD #	8464	
Bordnetz-SG/IPS #		
Kompressoreinheit/APS #		
Gewicht / Weight		
Leergewicht/weight [kg]	1326	
Maße/dimensions*		
Gesamtlänge/length [mm]		
Breite VA/width front [mm]		
Breite HA/width rear [mm]		
Ü.-hang VA/front overh. [mm]		
Ü.-hang HA/rear overh. [mm]		
Radstand/wheel base [mm]	2475 / 2475	
*Entsprechend Reglement/According to regulations		
Sonstiges/others		

DMSB

DMSB CERTIFICATE NUMBER

12-148/67-S

SAFETY CAGE CERTIFICATE

In compliance with FIA Homologation Regulations for Safety Cages

USE PROHIBITED FOR SAFETY CAGES OF HISTORIC VEHICLES

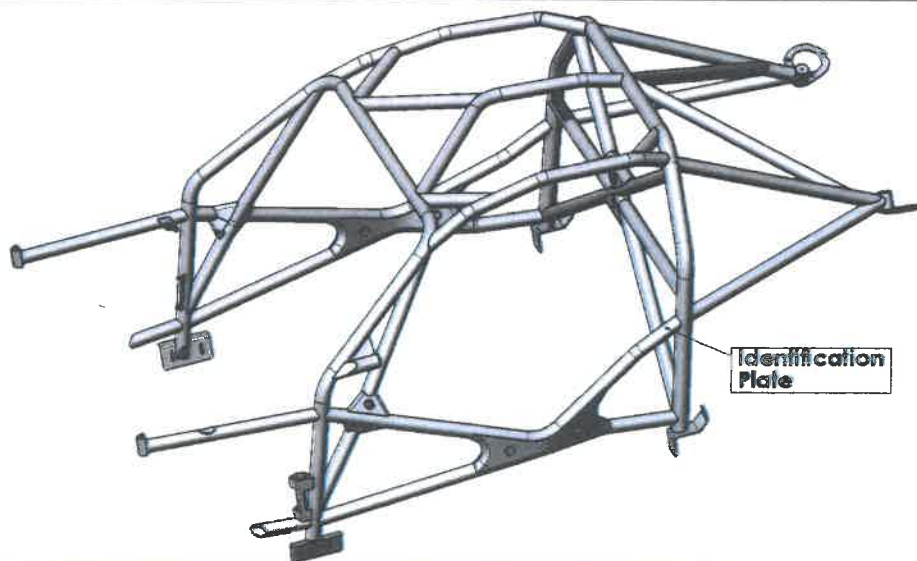
This Certificate is valid only for the Safety Cage bearing the Serial Number shown on Page 7 of 7

Safety Cage Manufacturer	CP Tech GmbH
Address	Dornierstraße 7 D-33142 Büren
Phone n° + Email	+49 (0) 2955 - 4849-500 / info@cp-tech.com

The structure shown on this form is manufactured for the following vehicle:

Make	Porsche	Model	Cayman	Year/Model Identifier	982
Vehicle Homologation Number(s)* *if applicable					

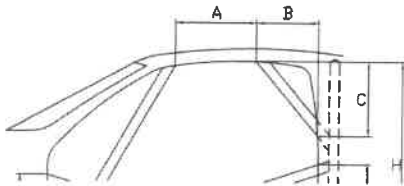
Drawing of front ¾ view of the Complete Structure showing the location of the identification plate



IT IS ACCEPTED BY ALL PARTIES AND ENTITIES CONCERNED WITH THIS DOCUMENT AND ITS CONTENT THAT, IN THE LAST RESORT, THE FIA HOLD FULL AUTHORITY TO TESTIFY TO THE REGULATORY VALIDITY OF THIS CERTIFICATE IN CASE OF DIFFICULTIES REGARDING THE APPLICATION OR INTERPRETATION OF THE RULES AND/OR REQUIREMENTS REFERRED TO ABOVE

DMSB

DMSB CERTIFICATE NUMBER

12-148/67-S**DETAILS OF STRUCTURE**

A + B = 670 mm B = mm
C = mm E = 393 mm
H = 803 mm (E is highest figure only)

All Dimensions ± 5mm

Method of attachment to Body Shell	welded / screwed
Weight of Safety Cage, inc. fastenings	51 kg

This document is valid only if fully completed and issued as a validated original document by the DMSB (The issuing ASN). It must be presented, in full, on demand to FIA or ASN delegates or Technical Scrutineers of the Meeting (Competition). The authorisation of this form by the issuing ASN certifies that the structure shown herein complies with the basic strength and configuration requirements of the FIA Homologation Regulations for Safety Cages.

It does not certify that the structure complies with the requirements of any particular competition or technical regulations.

This certificate becomes invalid if the structure is modified in any way from the design shown herein.

FOR THE USE OF THE ISSUING ASN ONLY

The issuing ASN (DMSB), having been satisfied that the Safety Cage design identified in this Certificate has been demonstrated to meet the requirements of the FIA Homologation Regulations for Safety Cages, certifies that the design of the Safety Cage Structure is valid for use, subject to the restrictions listed below, in all events sanctioned by the issuing ASN and International events sanctioned by the FIA.

Name of Authorising Officer	Yves Nold	
Position	Technical Department	
Signed	<i>Yves Nold</i>	
Date:	<u>17</u> / <u>12</u> / <u>2018</u>	

Remarks/Restrictions

- a) Generally the certificate is valid for all type of events: yes no
b) Certificate is only valid for type of events **without co-driver**: yes no
c) Certificate is valid for DMSB-groups: yes no
d) Certificate is valid for FIA-appendix J-groups: yes no
e) Certificate is valid for group(s): yes no
- FIA Group E II-SH (Appendix J – Art. 277)

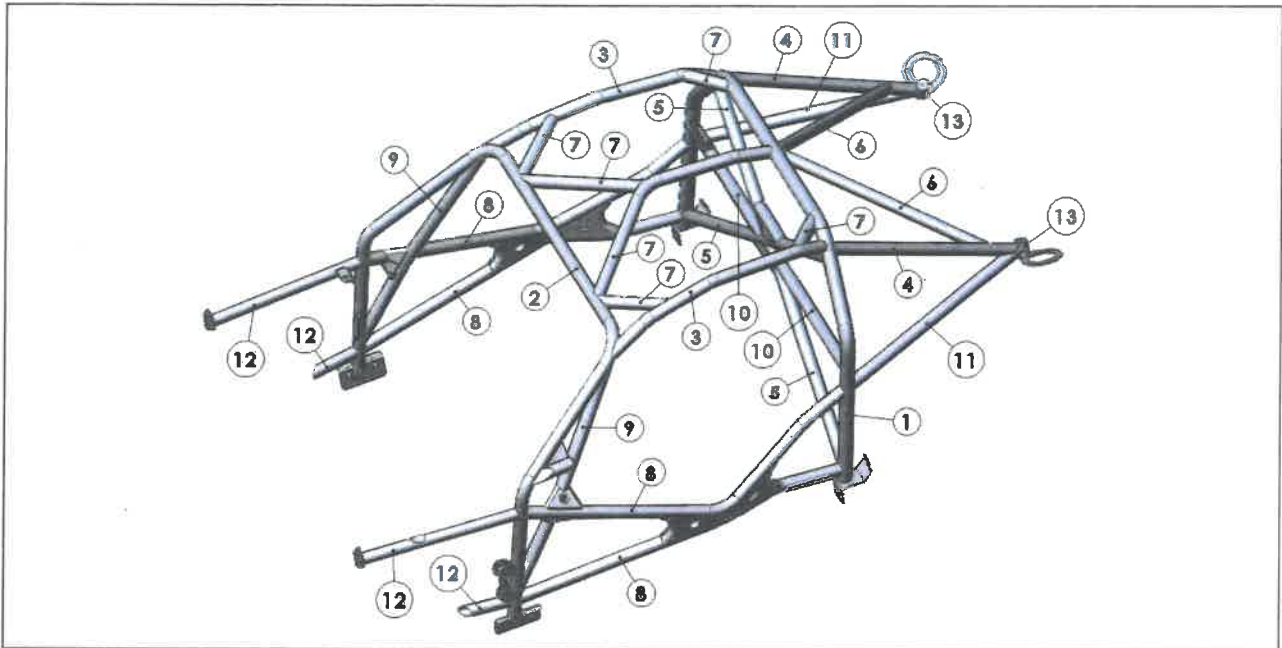
The safety cage is allowed to use in cars with:

- a) left hand steering wheel: yes no
b) right hand steering wheel: yes no

Further remarks/restrictions may be on page 8.

The certificate is not valid in groups in which a FIA-homologation is necessary.

LABELLED DRAWING OF THE SAFETY CAGE STRUCTURE SHOWING ALL TUBING DIMENSIONS



All Dimensions $\pm 0.1\text{mm}$		Show location of each type on drawing			
Tube / Member	Label	Grade of Steel	External Diameter (OD)	Wall Thickness	Min. Tensile Strength
Main Rollbar	1	1.7218	45 mm	2,5 mm	800 N/mm ²
Front Rollbar	2	1.7218	40 mm	2,0 mm	800 N/mm ²
Lateral Rollbar	3	1.7218	40 mm	2,5 mm	800 N/mm ²
Backstays	4	1.7218	40 mm	1,5 mm	800 N/mm ²
Main rollbar Diagonal members	5	1.7218	40 mm	2,0 mm	800 N/mm ²
Backstay Diagonal members	6	1.7218	40 mm	1,5 mm	800 N/mm ²
Roof Reinforcements	7	1.7218	40 mm	2,0 mm	800 N/mm ²
Doorbars	8	1.7218	40 mm	2,0 mm	800 N/mm ²
Windscreen Pillar Reinforcements	9	1.7218	40 mm	2,0 mm	800 N/mm ²
Harness Bar	10	1.7218	40 mm	2,0 mm	800 N/mm ²
	11	1.7218	40 mm	1,5 mm	800 N/mm ²
	12	1.7218	38 mm	1,5 mm	800 N/mm ²
	13	1.7218	40 mm	2,0 mm	800 N/mm ²
			mm	mm	N/mm ²
			mm	mm	N/mm ²

Total length of all tubes < 40 mm OD	1440 mm	15 m maximum
--------------------------------------	---------	--------------

PHOTO 1
FRONT ¾ VIEW OF CAGE



PHOTO 2
REAR ¾ VIEW OF CAGE

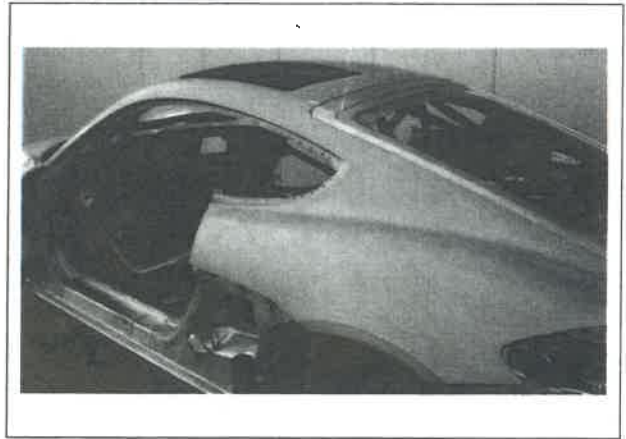


PHOTO 3
VIEW FROM SIDE OF CAR

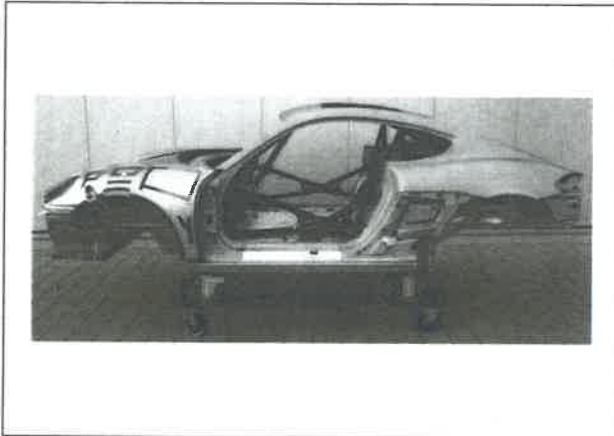


PHOTO 4
MAIN ROLLBAR TO FLOOR ATTACHMENT

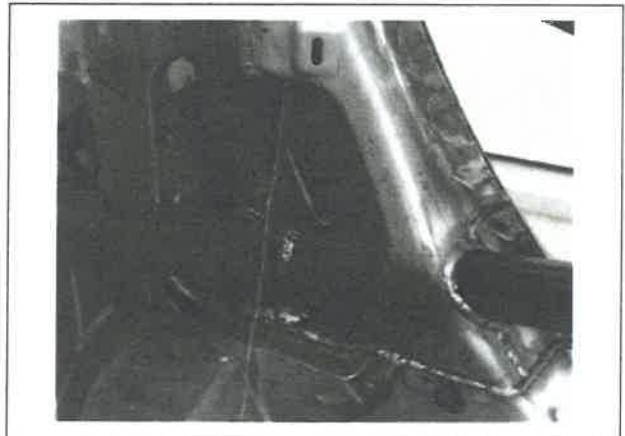


PHOTO 5
REAR BACKSTAY TO BODYSHELL ATTACHMENT

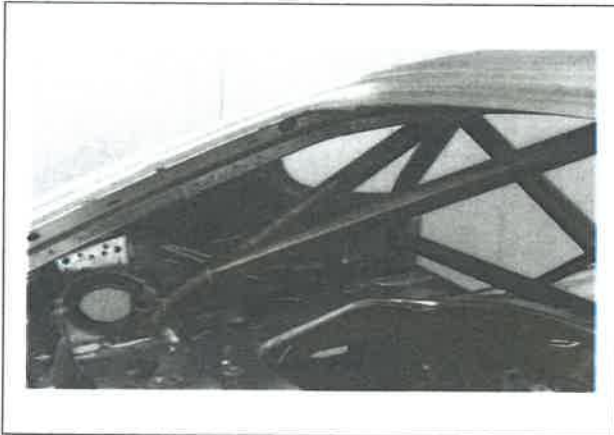


PHOTO 6
FRONT ROLLBAR TO FLOOR ATTACHMENT



PHOTO 7
FRONT ROLLBAR TO "A" PILLAR ATTACHMENT

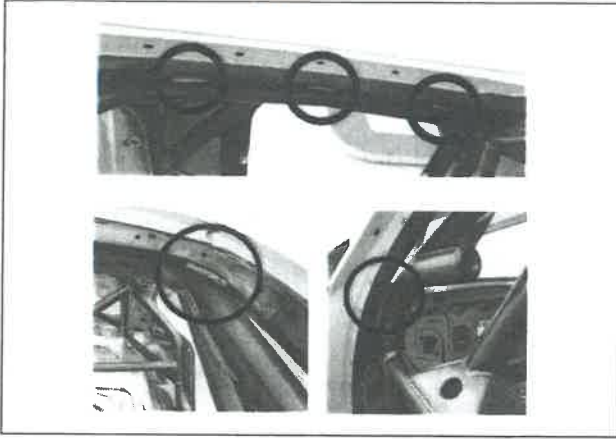


PHOTO 8
MAIN ROLLBAR TO "B" PILLAR ATTACHMENT

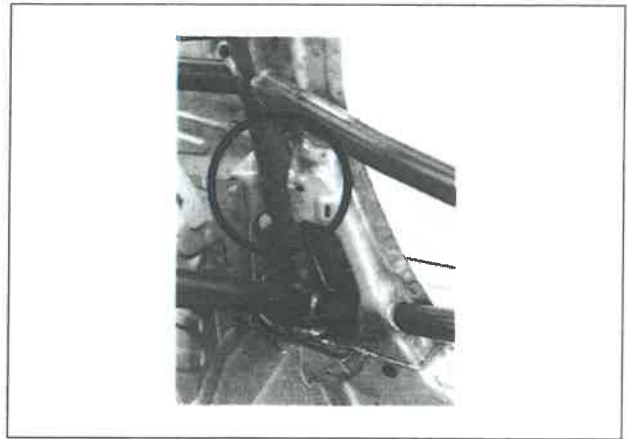


PHOTO 9
ATTACHMENT TO FRONT SUSPENSION

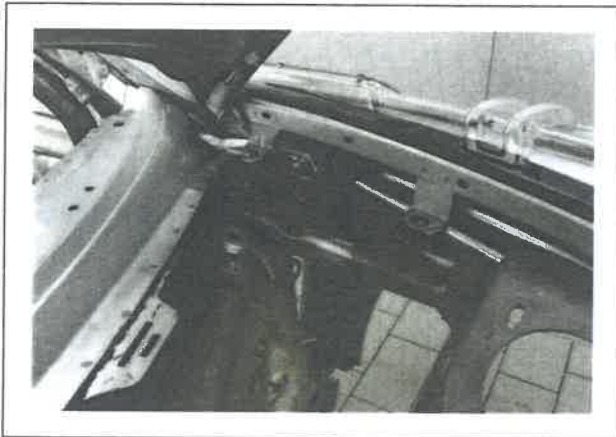


PHOTO 10
ANTI-INTRUSION DOORBAR - DRIVER

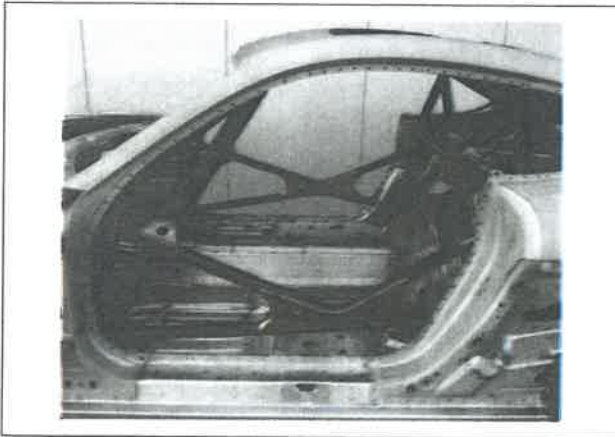


PHOTO 11
ANTI-INTRUSION DOORBAR - CO-DRIVER

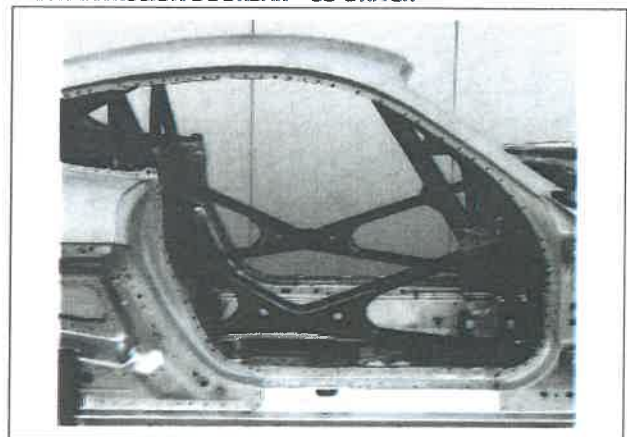


PHOTO 12
SHOULDER HARNESS ATTACHMENT – DRIVER

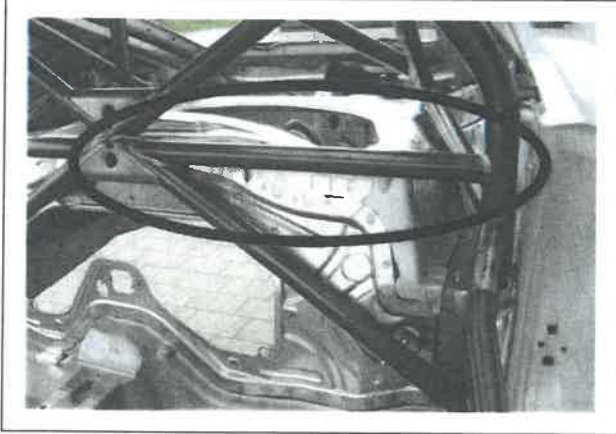


PHOTO 13
SHOULDER HARNESS ATTACHMENT – CO-DRIVER

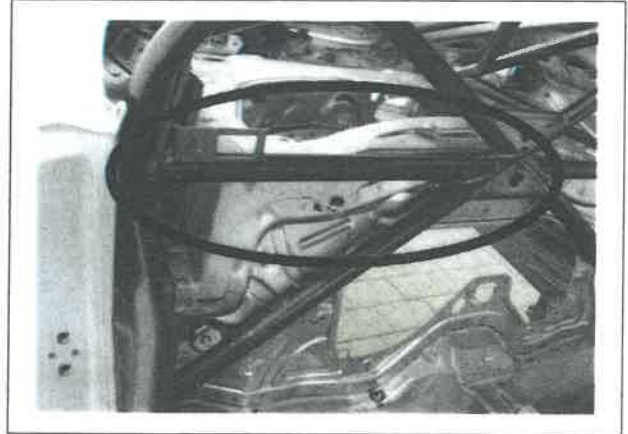


PHOTO 14
LOCATION OF IDENTIFICATION PLATE



PHOTO 15
DETAIL OF IDENTIFICATION PLATE



The serial number is variable

PHOTO 16
OTHER DETAILS OF CAGE

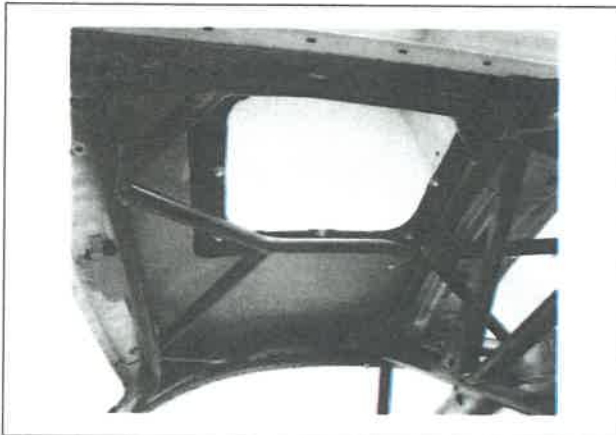


PHOTO 17
OTHER DETAILS OF CAGE

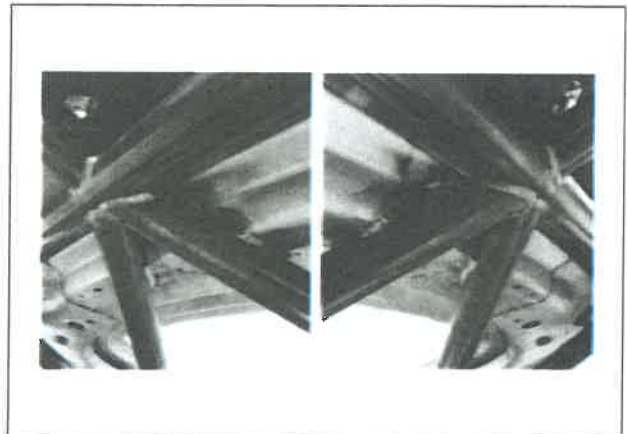
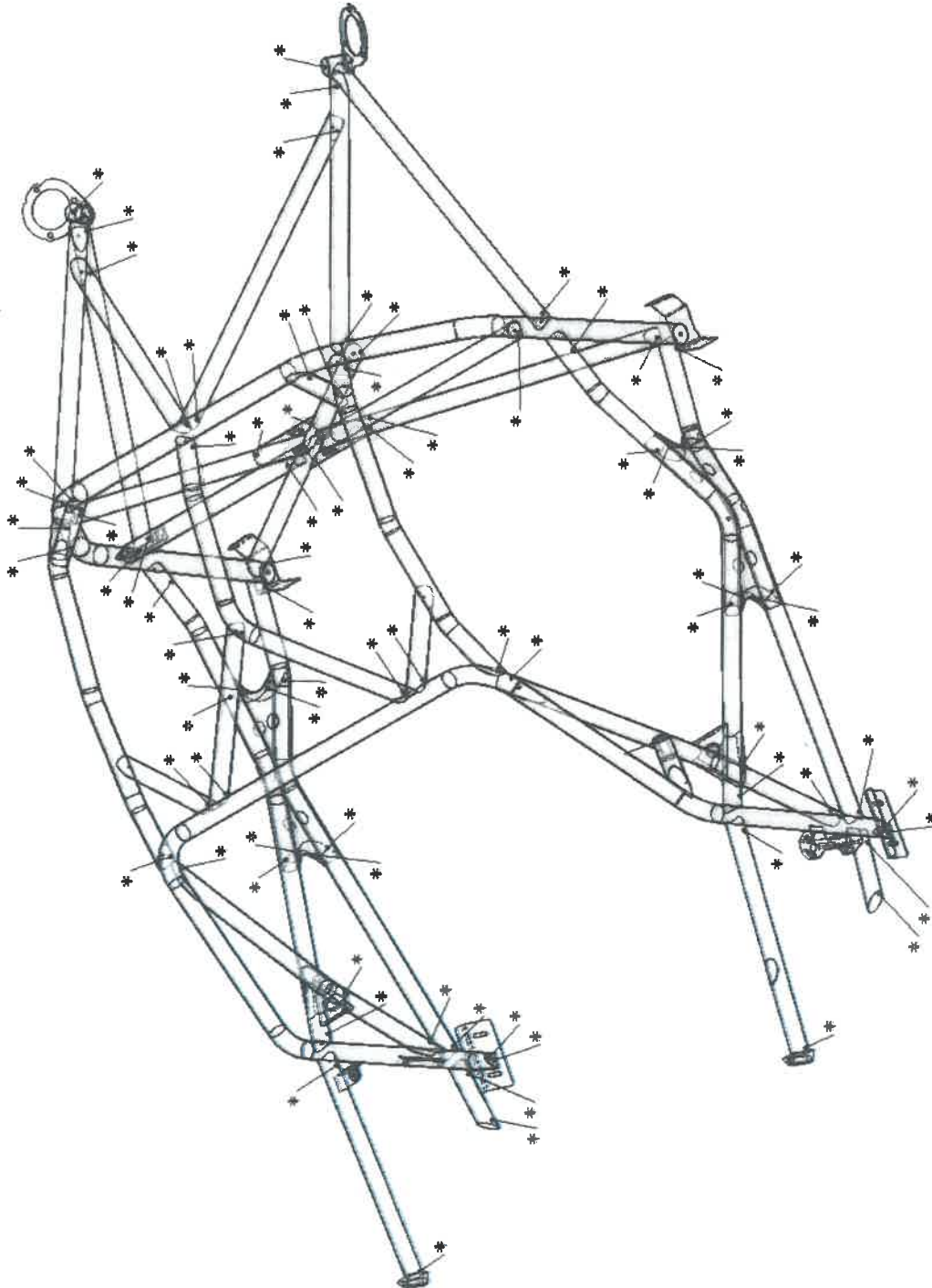


PHOTO 18
OTHER DETAILS OF CAGE

Bohrungen \varnothing 5.0 mm
Bore \varnothing 5.0 mm

An den markierten Stellen sind Bohrungen von \varnothing 5.0 mm zulässig
At the shown markings are holes with \varnothing 5.0 mm allowed



DMSB

DMSB CERTIFICATE NUMBER


12-148/67-S

V.I.N. or Chassis Identification Number	WPOZZZ98ZLK299654
Safety cage identification Number	CP#356#

MANUFACTURER'S DECLARATION AND DETAILS:

I declare that the Safety Cage Structure described on this form and fitted to the vehicle described above:

- was constructed and installed in accordance with the specifications and design shown herein.
- has been manufactured so that all aspects of the Safety Cage design, including configuration and strength requirements and welded and demountable joints and mountings, will be in conformity with the requirements of the FIA Homologation Regulations for Safety Cages.
- has been identified by an engraved plate bearing the name or logo of the manufacturer, the DMSB Certificate number and a unique manufacturer's serial number.

Manufacturer's Name	CP Tech GmbH
Address	Dornierstraße 7 D-33142 Büren
Phone n° + Email	+49 (0) 2955 – 4849 500 info@cp-tech.com
Signature:	
Name of Signatory*	J. Breimhorst

Instructions to the installer of the Safety Cage

All welding work on the safety cage itself, as well as the welding of the safety cage into the vehicle, may only be carried out by the manufacturer of the cage.

Further remarks

The use of that safety cage with co-driver is permitted only on circuit events.